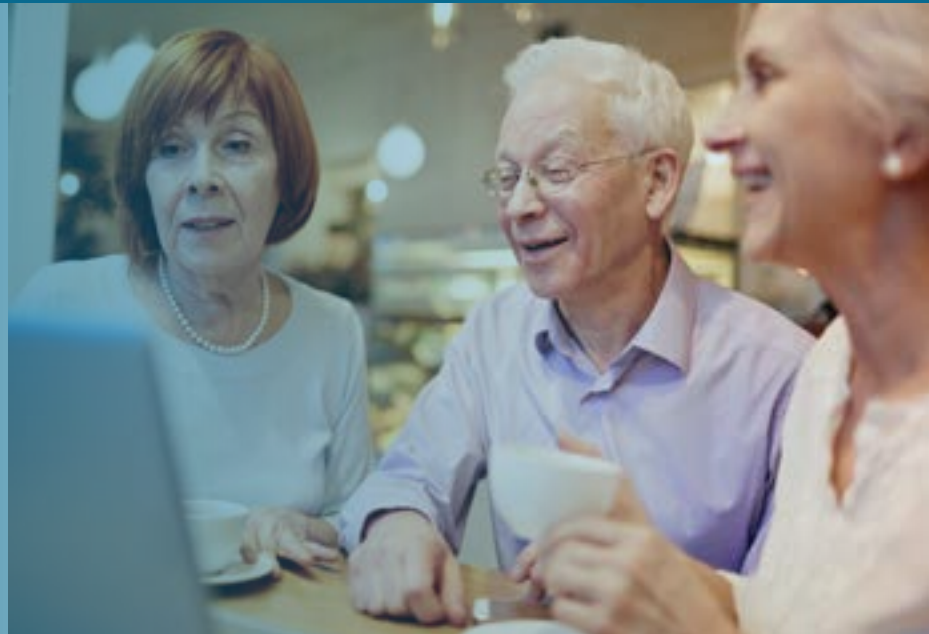


NEWSLETTER

June 2026 Issue #5 Activities & Results in 5th period

TOWARDS PROJECT CLOSURE: INTEGRAGE DRIVING REAL IMPACT FOR THE 55+ WORKFORCE

As the project approaches its final stage, it showcases practical solutions, intergenerational collaboration, and the power of lifelong learning for the 55+ workforce.



The IntegrAGE project is now strongly focused on implementation and practical impact. One of the major milestones achieved during this period was the completion of the Action Plans, which translate the project strategy and strategic goals into concrete actions and implementation measures for organisations, stakeholders, and policy-makers across the Danube Region.

Project partners also organized roadshows and dissemination events that brought together companies, employees, HR professionals, and local stakeholders to discuss the challenges and opportunities connected to an ageing workforce. These events highlighted the growing importance of age-friendly workplaces and lifelong learning, especially in the context of digital transformation.

An important step forward was the piloting of O3.1, the 55+ employee trainings. The trainings focused on practical workplace skills such as digital competences, communication, resilience, stress management, and adapting to new ways of work. The feedback from participants and companies was especially encouraging. One of the strongest messages from the pilots was

that many stereotypes connected to age and learning were challenged. Participants showed that there is no significant difference between generations when it comes to adaptability, motivation, or readiness to learn new skills — especially digital skills. Companies also expressed a strong interest in such learning opportunities, recognizing the value of continuous upskilling for employees of all ages.

At the same time, the project piloted O3.3 activities through Living Learning Labs (LLLs) and peer mentoring. The Living Learning Labs created open and collaborative spaces where companies and employees could exchange experiences, discuss workplace realities, and test practical solutions together. Feedback showed that companies highly appreciated these formats, while employees particularly valued the opportunity to openly share experiences and learn from one another in an informal and supportive environment.

Peer mentoring activities also proved highly valuable. Participants highlighted that mentoring and reverse mentoring are not only useful for knowledge transfer, but also for helping employees discover and better un-

derstand other members of the organisation. The activities strengthened communication between generations, encouraged collaboration, and helped build stronger interpersonal connections within teams.

IntegrAGE continues to demonstrate that inclusive learning, intergenerational cooperation, and practical workplace support are key elements for creating healthier, more resilient, and more sustainable working environments for employees aged 55+.





CLOSING CONFERENCE

6/May/2026, Bratislava

The IntegrAGE Closing Conference was more than just the final event of a project — it was a reflection of nearly two years of shared learning, collaboration, and commitment to building more inclusive and sustainable workplaces. Bringing together international experts, researchers, and business leaders, the conference created a dynamic space where ideas, experiences, and practical solutions could meet.

Throughout the day, one message became increasingly clear: the future of work depends on our ability to value diversity, support wellbeing, and foster cooperation across generations. The sessions highlighted how the IntegrAGE project successfully turned its vision into concrete, usable results. Through international cooperation, partners developed practical tools and approaches that support organisations in addressing demographic change and workforce challenges. This demonstrated that age management can become a real, everyday practice with tangible benefits. A strong emphasis was placed on the human side of employment. Contributions on burnout prevention drew attention to workplace wellbeing, while other perspectives highlighted the many barriers people may face beyond age, underlining the importance of inclusive and flexible solutions. The conference also celebrated success through an award ceremony and offered inspiring insights for the future. The final discussions on intergenerational cooperation reinforced the idea that collaboration between age groups is not only a social value, but also a driver of stronger, more resilient organisations. Ultimately, the event conveyed a clear message: building a fair, inclusive, and sustainable labour market requires shared responsibility, openness, and long-term commitment.

FINAL VERSION OF THE INTEGRAGE STRATEGY COMPLETED

A Comprehensive Framework Advancing Healthy Ageing and Inclusive Employment Across the Danube Region

The first version of the IntegrAGE Strategy & Action Plans for the Healthy Integration of Senior Employees and Holistic Age Management on the Labour Market was developed during the second period. Until the end of the project, the partners continuously worked on updating and refining the strategy, resulting in the final version by the end of the fifth reporting period.

The strategy focuses on supporting the healthy integration of employees aged 55+ into the labour market and promoting holistic age management practices across the Danube Region. It addresses demographic ageing, labour shortages, lifelong learning, workplace health promotion, and age-inclusive employment policies. The document introduces a comprehensive framework built on three main pillars: prevention, personalised support, and community participation, aiming to strengthen the well-being, employability, and social inclusion of older workers. It also defines five strategic objectives, including labour market integration, health and wellbeing, lifelong learning, flexible workplace culture, and entrepreneurship.

Parallel with the strategy development process, the action plans prepared by the four clusters were also revised and updated in order to align them with the final strategic objectives and the latest project results.

CONTACT

BSC, Business support centre L.t.d., Kranj
www.bsc-kranj.si
info@bsc-kranj.si

<https://interreg-danube.eu/projects/integrage>

The IntegrAGE Platform Is Now Live!

The IntegrAGE platform has officially launched, offering a powerful, multilingual hub to support age-inclusive workplaces. Designed for employers and HR professionals, it helps organizations embrace demographic change and unlock the value of age diversity. Explore practical resources, real-life case studies, ready-to-use tools, and key legal insights—all in one place. Connect with experts, gain fresh perspectives, and create stronger intergenerational teams. **Discover how to successfully integrate the 55+ workforce and build a more inclusive future.**

www.agemanagementplatform.com

